

CPS 10505/1 - Context Map

117°36'0"E

118°0'0"E

118°24'0"E

30°24'0"S

30°48'0"S

31°12'0"S

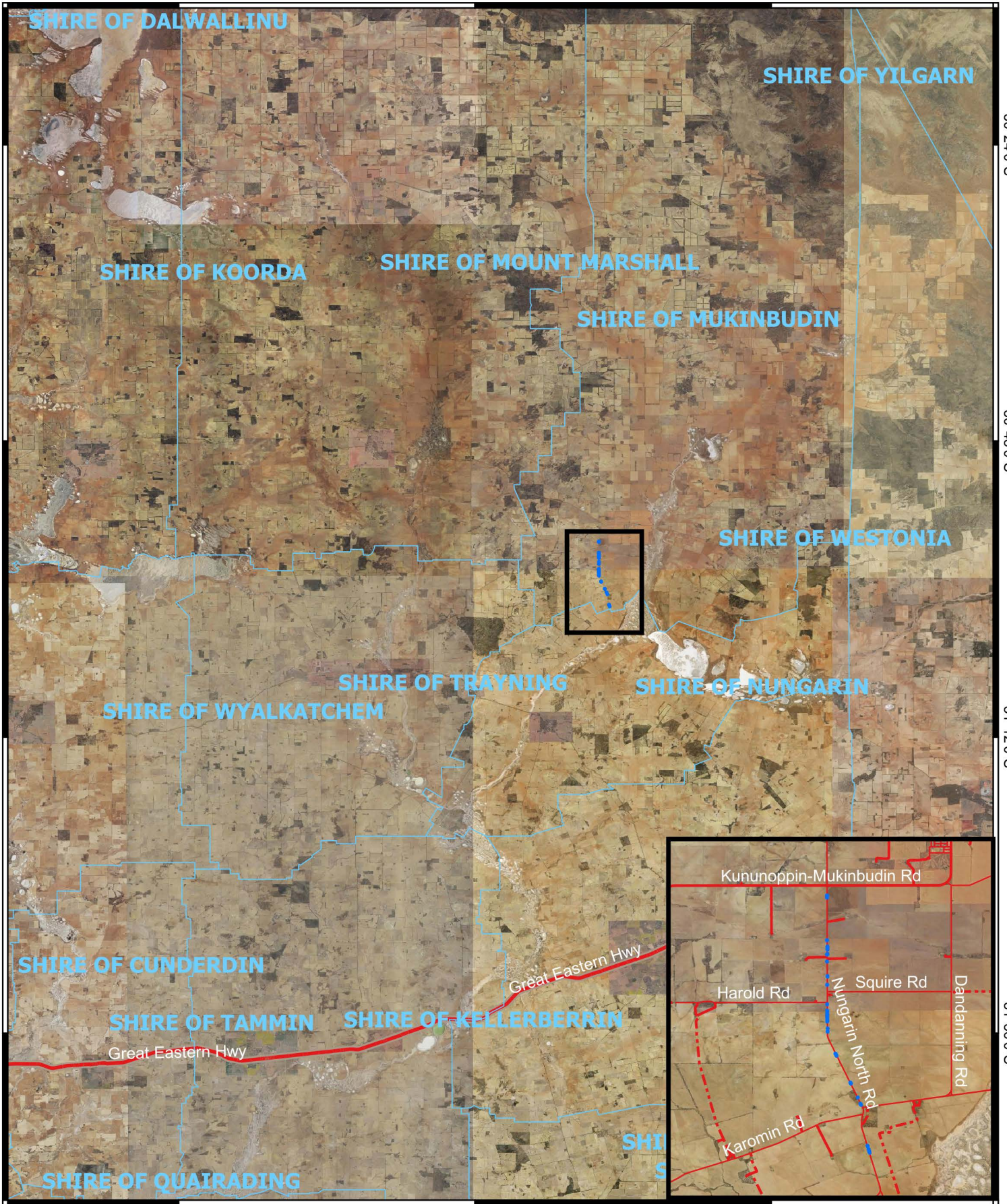
31°36'0"S

30°24'0"S

30°48'0"S

31°12'0"S

31°36'0"S



117°36'0"E

118°0'0"E

118°24'0"E

Legend

-  CPS areas applied to clear
-  Local Government Authorities
-  National Highway



0 10 20 30 40 km



1:500,000

Projection: GDA2020



GOVERNMENT OF
WESTERN AUSTRALIA